

BAUNOMODULES

Our concrete modules covered with limestone are your solution for erosion control along beaches, rivers, lakes, and canals. They can be used to form deep or shallow water artificial reefs and living shorelines.

They contribute to the stability and provide reinforcement that dramatically increases the erosion protection capabilities of the soil.



Each module is 6' x 12' x 3' and weighs over 17,000 lbs. There are 4 lifting points for easy installation with a fork lift or crane.

Our module can be used as solution for:

- Erosion Control
- Artificial Reefs
- Coastal Protection
- Separation Walls
- Stormwater control
- Stormwater biofiltration.
- Protection for Ponds, Lagoons, Canals, Levees, Rivers, and more

Many In Stock :

**Delivery -
unloading and
placement
available**

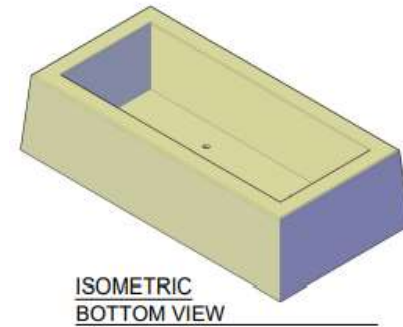
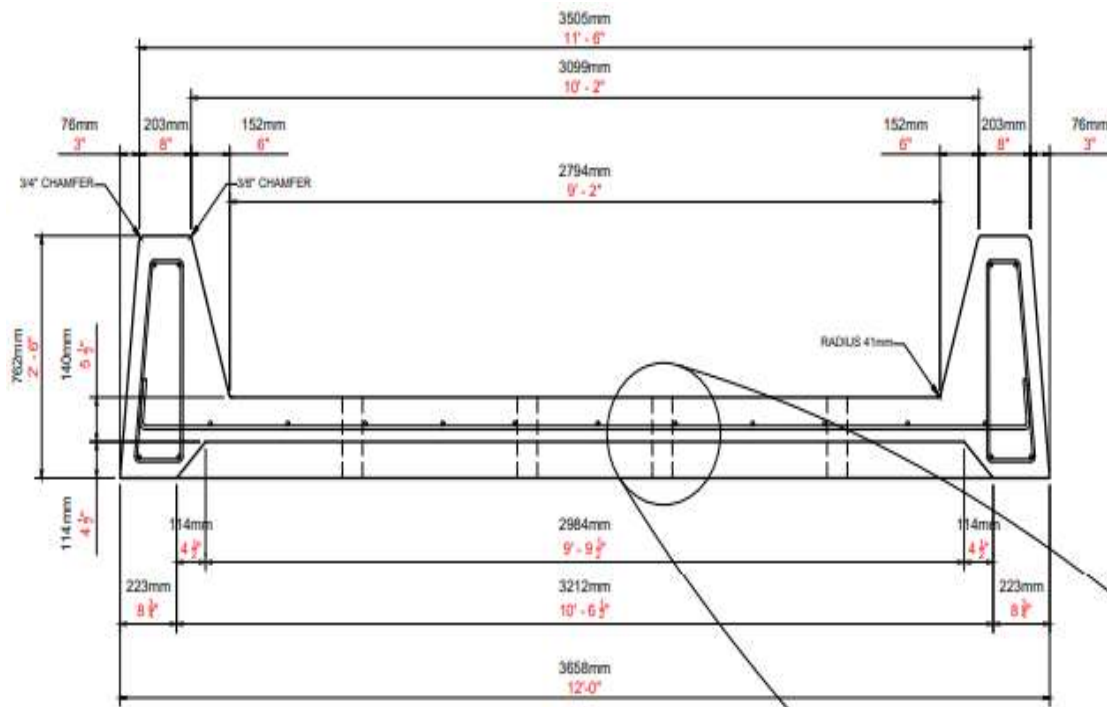
GCS Outdoors

Tampa / Orlando

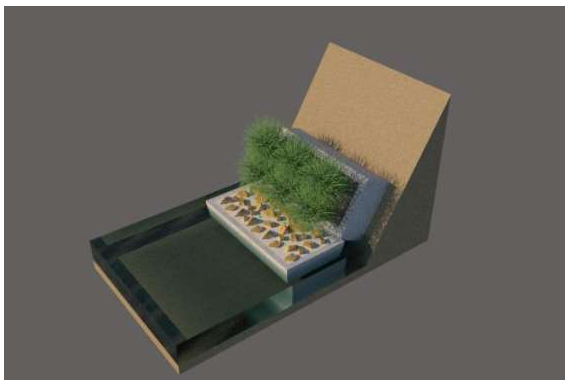
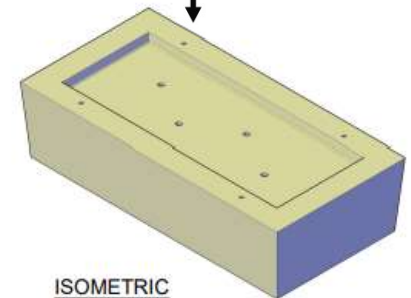
Brad Boulton

407.669.7044

bboulton@acp-fl.com



4 lifting
points



GCS Outdoors
Tampa / Orlando
Brad Boulton
407.669.7044
bboulton@acp-fl.com